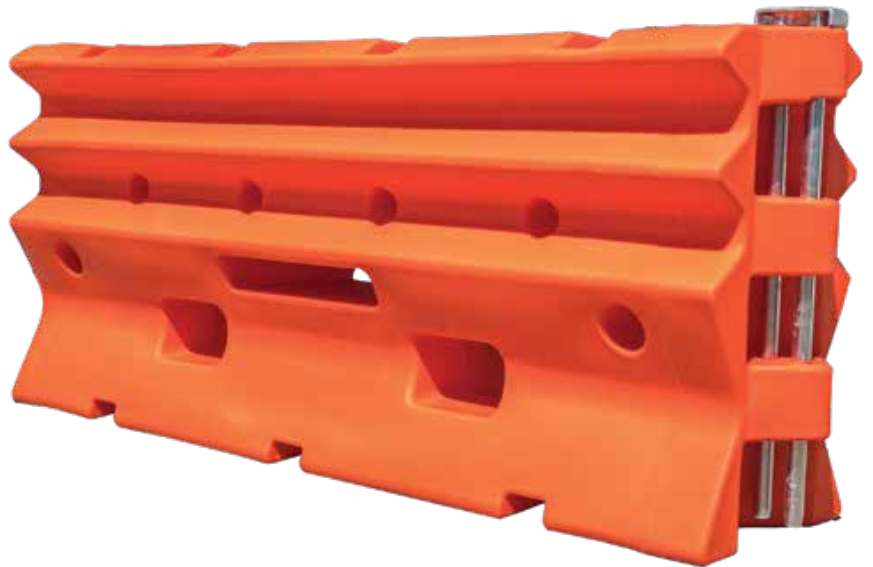


BASE PRODUCT CODE 15-MAZCB-R



SPECIFICATIONS

ArmorZone™ is a barrier made up of 2m long plastic units that when joined together using the ArmorZone™ 'twin' pin and filled with water, provides positive work zone barrier protection to temporary construction sites and other miscellaneous roadside activities. The ArmorZone™ barrier connects directly to the ArmorZone™ end treatment which negates the need to shield or flare the ends of the barrier. Aust. Roads approved.

- Tested, approved and certified to American (TL-2, MASH) and European (NI, EN1317) containment level standards
- Exceptionally good vehicle control and low deflection
- Available NCHRP 350 TL-2 end treatment
- MASH Test Level 2 (2,270kg at 70 km/h)

LENGTH	2000mm
HEIGHT	860mm
WDTH	450mm
MATERIAL	HD Stabilised PE (UV8)
CONNECTOR	Galavinsed Steel Pin
WEIGHT	56kg (496kg when full)
WATER REQUIRED	440 Litres (per unit)
DEFLECTION	2.1m (50km/h) / 4.1m (70km/h)
LEADING P.O.N	24m
MINIMUM LENGTH	50m